

Planul încăperii izolate locative (bun viitor)

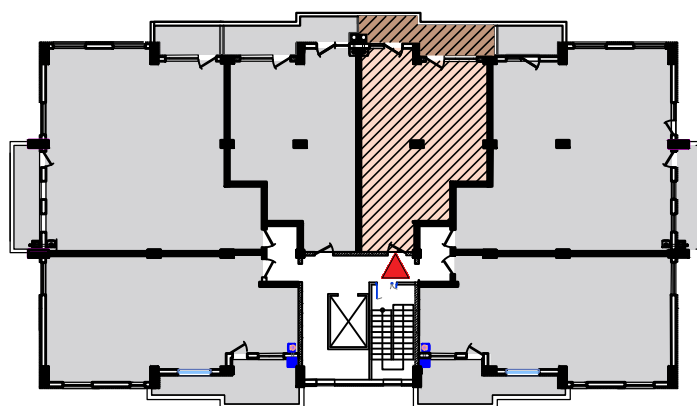
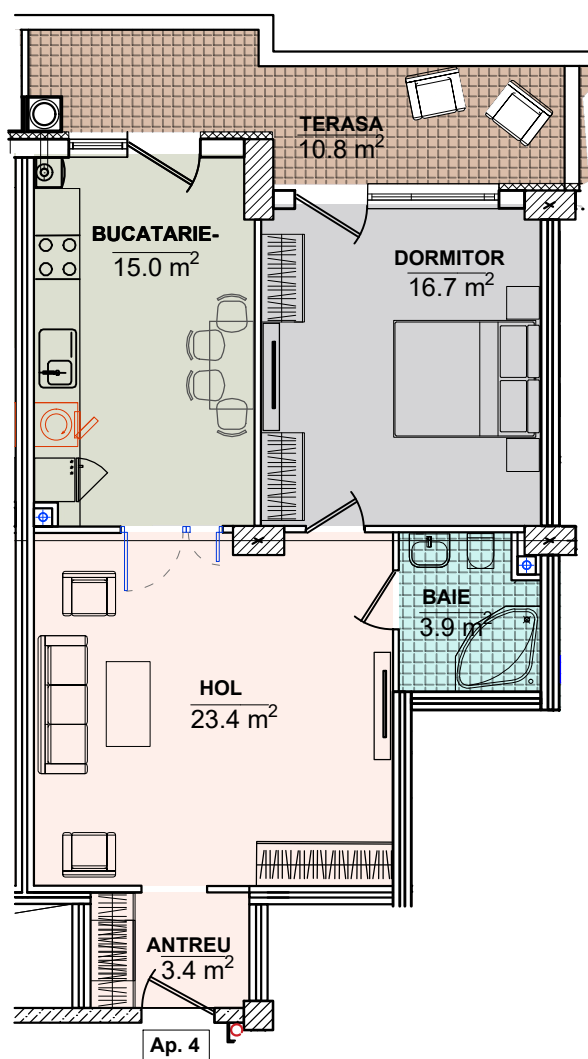
Numarul cadastral: 5511105.530.04.004

Adresa bunului imobil: mun. Chişinău, com. Băcioi, str. Dacia

Suprafaţa totală a apartamentului: 65,6 m.p.

inclusiv suprafaţa terasei: $(10,8 \text{ m.p.} * 0,3) = 3,24 \text{ m.p.}$

BLOCUL 11 (D)
PLAN PARTER, NIVEL 1, COTA +0.000, SC: 1:100



SCHEMA CONSTRUCTIVA